

# COCAINE IN SOUTHWESTERN CT



12.6% of suicides in the state of CT from 2015-2021 involved cocaine

## Cocaine

Cocaine is a powerfully addictive stimulant drug. Individuals may also use opioids (including heroin and fentanyl) or alcohol.

## CT Emerging Trend

Data reflects that the likelihood of individual's overdosing from cocaine alone is rare; the rate of overdoses which involve cocaine and fentanyl is becoming increasingly responsible for fatalities

## CT Snapshot



Cocaine use continues to rise in CT, with a **30% increase** in cocaine-involved overdose deaths between 2021 and 2022.



The most common stimulant involved in overdose deaths in 2021 was **cocaine (39.7%)** across the state of Connecticut.



In 2022, there were **26,710** total treatment admissions for cocaine



Across CT, in 2015, there were **729** accidental drug intoxication deaths compared to 2021, **1524 deaths**.

## Cocaine Related Overdose Deaths Across Connecticut

**2020:**

**529 Overdoses**



**2021:**

**656 Overdoses**



**2022:**

**684 Overdoses**

# COCAINE IN SOUTHWESTERN CT



**1.2 PERCENT**

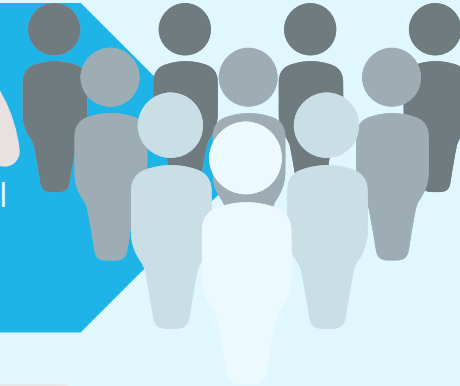
of Connecticut students reported using some form of cocaine in their lifetime.

**0.6%**

of CT High school **FEMALES** reported cocaine use

**1.7%**

of CT High school **MALES** reported cocaine use



In Southwestern CT, from 2015 - 2022

**450**

overdoses deaths involved **cocaine**

## COCAINE AND FENTANYL

In SW CT in 2021, there were **70 cocaine involved overdose deaths** whereas 2022 data thus far reflects **91 cocaine involved overdose deaths**

---

**25.5%** of state overdoses were a lethal combination of **cocaine and fentanyl.**

In SW CT there are over 30 public and nonprofit addiction treatment facilities, private substance use treatment facilities and specialty hospital programs

### For More Info

Find resources and more at [thehubct.org/illicit-drugs](https://thehubct.org/illicit-drugs) or scan the QR code below.

